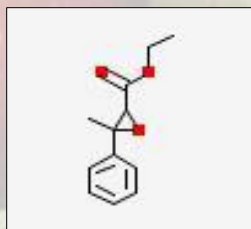


Strawberry Aldehyde (Aldehyde C-16)

Ethyl Methylphenylglycidate



CAS No.:	77-83-8
Molecular Weight:	206.24
Formula:	$C_{12}H_{14}O_3$

Product Description

Apart from utilization in strawberry compounds, this product is useful in a variety of floral compositions, such as jasmine and rose. 'Strawberry Aldehyde' adds warmth to a fragrance as well as reinforcing top notes. It blends particularly well with ionones, hydroxycitronellal, woody notes, aldehydes and fruity lactones.

Product Shelf Life	12 months or longer if stored properly
Storage	Store in tightly sealed containers in a cool and dry place. The product is Moisture Sensitive
Application Areas	Creams, Detergent Powder, Hair Spray, Household Products, Lotions, Powder & Soap

Product Specifications

Parameter	Specifications
Appearance	Colorless to pale yellow Clear liquid
Specific Gravity	1.086 to 1.112 @ 25.00 °C
Refractive Index	1.499 to 1.512 @ 20.00 °C
Boiling Point	272 °C to 275 °C @ 760.00 mm Hg
Assay	98.00 to 100.00 sum of isomers
Acid Value (KOH / g)	2.00 max
Flash Point	>94 °C

Organoleptic Properties

Odor Strength	Medium
Substantivity	241 hours at 100.00 %
Odor Description at 100.00 %	Sweet, Fruity, Strawberry, Floral, Honey, Fatty
Taste Description at 50 ppm	Sweet, Berry, Strawberry, Fruity, Tutti Frutti And Floral Nuances